

Interviewing: September 11-14, 2010
Sample: 1000 Adults nationwide online
713 registered voters nationwide online



806 D Street, SE
Washington, DC 20003

Contact:
Thomas Riehle
Ph: (202) 544-2550

The Economist/YouGov Poll

2010 Weekly Tracking

For immediate release

1. Approval of Obama as President – Historical

Do you approve or disapprove of the way Barack Obama is handling his job as President?

All Adults

	Total Approve	Total Disapprove	Strongly Approve	Somewhat Approve	Somewhat Disapprove	Strongly Disapprove	Not Sure
September 11-14, 2010	40%	52%	18%	22%	14%	38%	8%
September 4-7, 2010	43%	49%	17%	26%	12%	37%	8%
August 28-31, 2010	42%	51%	16%	26%	15%	36%	7%
August 21-24, 2010	42%	52%	17%	25%	15%	37%	6%
August 14-17, 2010	43%	52%	15%	28%	15%	37%	6%
August 7-10, 2010	45%	48%	20%	25%	12%	36%	7%
July 31-August 3, 2010	45%	48%	19%	26%	13%	35%	8%
July 24-27, 2010	44%	50%	16%	28%	12%	38%	6%
July 17-20, 2010	45%	48%	19%	26%	14%	34%	8%
July 10-13, 2010	48%	45%	18%	30%	13%	32%	7%
One Year Ago	49%	42%	28%	21%	11%	31%	9%

Registered Voters

	Total Approve	Total Disapprove	Strongly Approve	Somewhat Approve	Somewhat Disapprove	Strongly Disapprove	Not Sure
September 11-14, 2010	41%	54%	20%	21%	11%	43%	4%
September 4-7, 2010	45%	53%	20%	25%	12%	41%	3%
August 28-31, 2010	43%	53%	19%	24%	12%	41%	4%
August 21-24, 2010	43%	54%	19%	24%	13%	41%	4%
August 14-17, 2010	43%	55%	18%	25%	12%	43%	3%
August 7-10, 2010	46%	50%	22%	24%	9%	41%	4%
July 31-August 3, 2010	45%	51%	19%	26%	11%	40%	4%
July 24-27, 2010	46%	51%	19%	27%	10%	41%	3%
July 17-20, 2010	47%	49%	23%	24%	11%	38%	3%
July 10-13, 2010	49%	48%	21%	28%	11%	37%	3%
One Year Ago	50%	46%	32%	18%	10%	36%	4%

Obama Approval

"Do you approve or disapprove of the way Barack Obama is handling his job as President?"

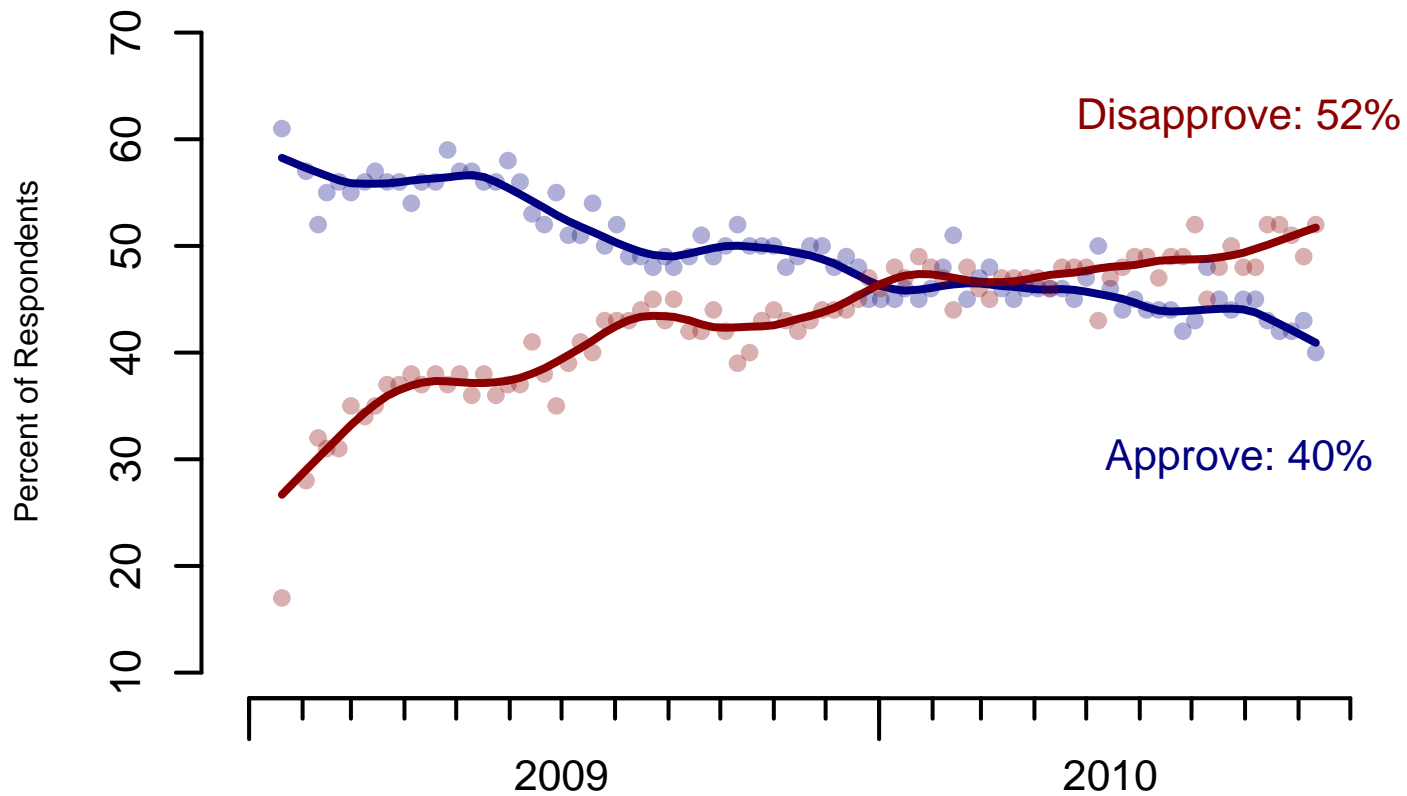


Figure 1: Obama Approval – All Adults

Obama Approval

"Do you approve or disapprove of the way Barack Obama is handling his job as President?"

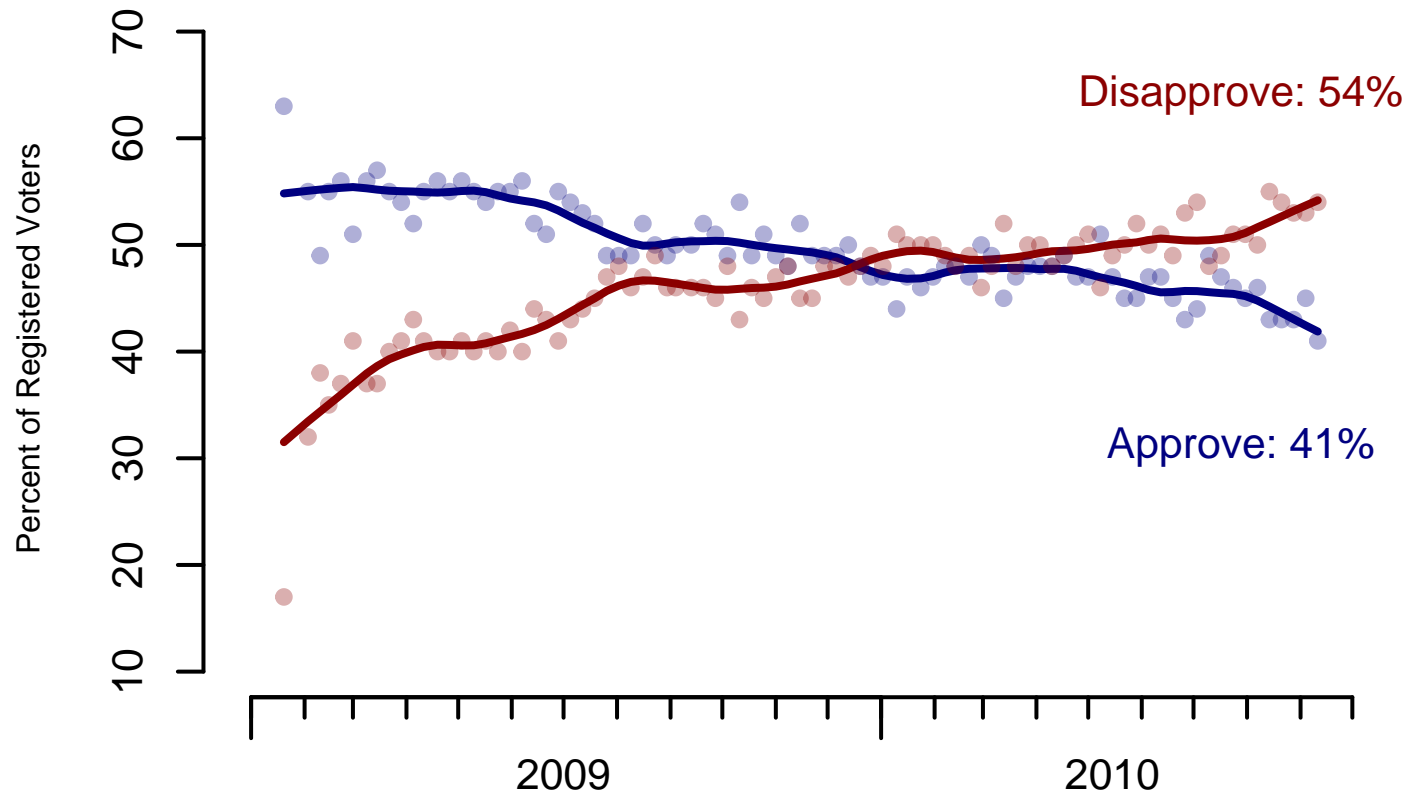


Figure 2: Obama Approval – Registered Voters

2. Approval of Obama as President – This Week

Do you approve or disapprove of the way Barack Obama is handling his job as President?

	Total	Age			Race			Gender		Education		
		18-29	30-64	65+	White	Black	Hispanic	Male	Female	HS or Less	Some College	College Grad
Strongly approve	18.3%	17.2%	19.2%	16.7%	13.9%	46.7%	19.9%	16.5%	19.9%	13.7%	19.4%	25.0%
Somewhat approve	21.7%	30.3%	20.4%	11.5%	20.1%	25.2%	30.8%	23.2%	20.4%	19.8%	22.9%	23.7%
Somewhat disapprove	13.6%	16.8%	12.6%	11.6%	14.7%	9.6%	9.8%	13.0%	14.2%	15.8%	13.3%	10.0%
Strongly disapprove	38.1%	23.6%	39.5%	57.9%	44.4%	3.8%	26.6%	43.0%	33.5%	38.7%	36.7%	38.6%
Not sure	8.3%	12.1%	8.2%	2.4%	6.9%	14.6%	13.0%	4.4%	12.0%	12.0%	7.7%	2.7%
Totals (Unweighted)	100.0% (997)	100.0% (230)	100.0% (628)	100.0% (139)	100.0% (723)	100.0% (98)	100.0% (176)	100.0% (472)	100.0% (525)	100.0% (451)	100.0% (288)	100.0% (258)

	Total	Party ID			Ideology			Region				Family Income		
		Dem	Rep	Ind	Lib	Mod	Con	Northeast	Midwest	South	West	Under 40	40-100	100+
Strongly approve	18.3%	37.2%	2.6%	11.2%	39.1%	23.1%	3.6%	21.2%	18.4%	20.1%	12.5%	16.5%	20.6%	20.9%
Somewhat approve	21.7%	37.5%	4.7%	21.1%	39.4%	31.1%	4.8%	24.1%	19.3%	19.0%	26.8%	23.4%	22.5%	15.8%
Somewhat disapprove	13.6%	12.1%	11.5%	15.7%	10.6%	17.0%	10.9%	14.6%	13.7%	12.2%	14.9%	13.6%	13.3%	16.1%
Strongly disapprove	38.1%	8.0%	79.1%	45.4%	3.5%	24.4%	80.1%	33.6%	38.1%	42.3%	35.0%	33.7%	39.4%	45.0%
Not sure	8.3%	5.2%	2.2%	6.5%	7.4%	4.4%	0.5%	6.6%	10.5%	6.4%	10.8%	12.6%	4.1%	2.4%
Totals (Unweighted)	100.0% (997)	100.0% (370)	100.0% (268)	100.0% (269)	100.0% (216)	100.0% (315)	100.0% (343)	100.0% (195)	100.0% (220)	100.0% (357)	100.0% (225)	100.0% (372)	100.0% (384)	100.0% (122)

	Total	Voter Registration		2008 Vote			Obama Approval		2010 Congressional Vote	
		Registered	Not registered	Obama	McCain	Other	Approve	Disapprove	Dem/Lean Dem	Rep/Lean Rep
Strongly approve	18.3%	20.1%	13.8%	40.8%	1.4%	2.3%	45.7%	0.0%	38.2%	1.6%

continued on the next page ...

	continued from previous page									
	Voter Registration		2008 Vote			Obama Approval		2010 Congressional Vote		
	Total	Registered	Not registered	Obama	McCain	Other	Approve	Disapprove	Dem/Lean Dem	Rep/Lean Rep
Somewhat approve	21.7%	21.2%	23.0%	35.8%	4.5%	22.9%	54.3%	0.0%	38.7%	4.6%
Somewhat disapprove	13.6%	11.4%	19.0%	11.3%	9.8%	16.1%	0.0%	26.3%	11.1%	13.4%
Strongly disapprove	38.1%	43.0%	25.9%	6.2%	83.3%	50.1%	0.0%	73.7%	4.1%	79.3%
Not sure	8.3%	4.4%	18.3%	5.9%	1.0%	8.6%	0.0%	0.0%	7.9%	1.1%
Totals (Unweighted)	100.0% (997)	100.0% (772)	100.0% (225)	100.0% (403)	100.0% (348)	100.0% (49)	100.0% (419)	100.0% (518)	100.0% (441)	100.0% (416)

3. Approval of U.S. Congress – Historical

Overall, do you approve or disapprove of the way that the United States Congress is handling its job?

All Adults

	Total Approve	Total Disapprove	Strongly Approve	Somewhat Approve	Neutral	Somewhat Disapprove	Strongly Disapprove	Not Sure
September 11-14, 2010	14%	65%	4%	10%	14%	21%	44%	7%
September 4-7, 2010	15%	66%	2%	13%	10%	22%	44%	9%
August 28-31, 2010	12%	65%	2%	10%	14%	23%	42%	9%
August 21-24, 2010	13%	66%	2%	11%	13%	22%	44%	8%
August 14-17, 2010	11%	68%	2%	9%	14%	23%	45%	7%
August 7-10, 2010	12%	64%	2%	10%	17%	19%	45%	7%
July 31-August 3, 2010	12%	63%	2%	10%	15%	20%	43%	11%
July 24-27, 2010	13%	59%	2%	11%	17%	21%	38%	10%
July 17-20, 2010	15%	59%	3%	12%	17%	20%	39%	9%
July 10-13, 2010	12%	65%	2%	10%	14%	27%	38%	9%
One Year Ago	14%	60%	2%	12%	17%	20%	40%	8%

Registered Voters

	Total Approve	Total Disapprove	Strongly Approve	Somewhat Approve	Neutral	Somewhat Disapprove	Strongly Disapprove	Not Sure
September 11-14, 2010	14%	70%	4%	10%	11%	21%	49%	4%
September 4-7, 2010	15%	72%	2%	13%	8%	24%	48%	5%
August 28-31, 2010	14%	74%	2%	12%	10%	23%	51%	3%
August 21-24, 2010	11%	74%	2%	9%	11%	22%	52%	4%
August 14-17, 2010	11%	74%	2%	9%	12%	23%	51%	3%
August 7-10, 2010	13%	69%	1%	12%	14%	19%	50%	4%
July 31-August 3, 2010	11%	71%	1%	10%	11%	20%	51%	6%
July 24-27, 2010	14%	66%	2%	12%	15%	20%	46%	5%
July 17-20, 2010	16%	66%	3%	13%	14%	21%	45%	4%
July 10-13, 2010	11%	73%	2%	9%	10%	28%	45%	5%
One Year Ago	15%	67%	3%	12%	13%	21%	46%	5%

Congress Approval

"Do you approve of the way the U.S. Congress is handling its job?"

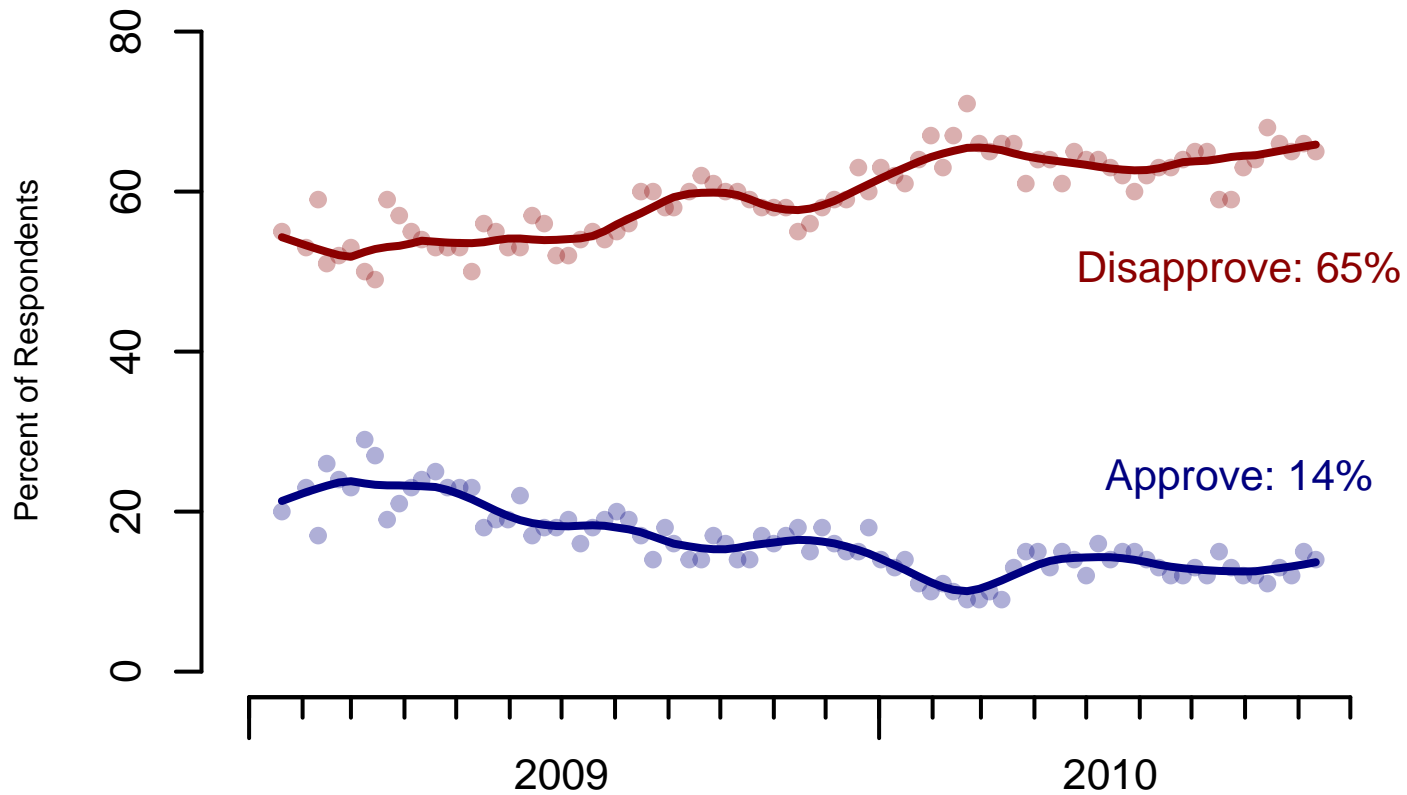


Figure 3: Congress Approval – All Adults

Congress Approval

"Do you approve of the way the
U.S. Congress is handling its job?"

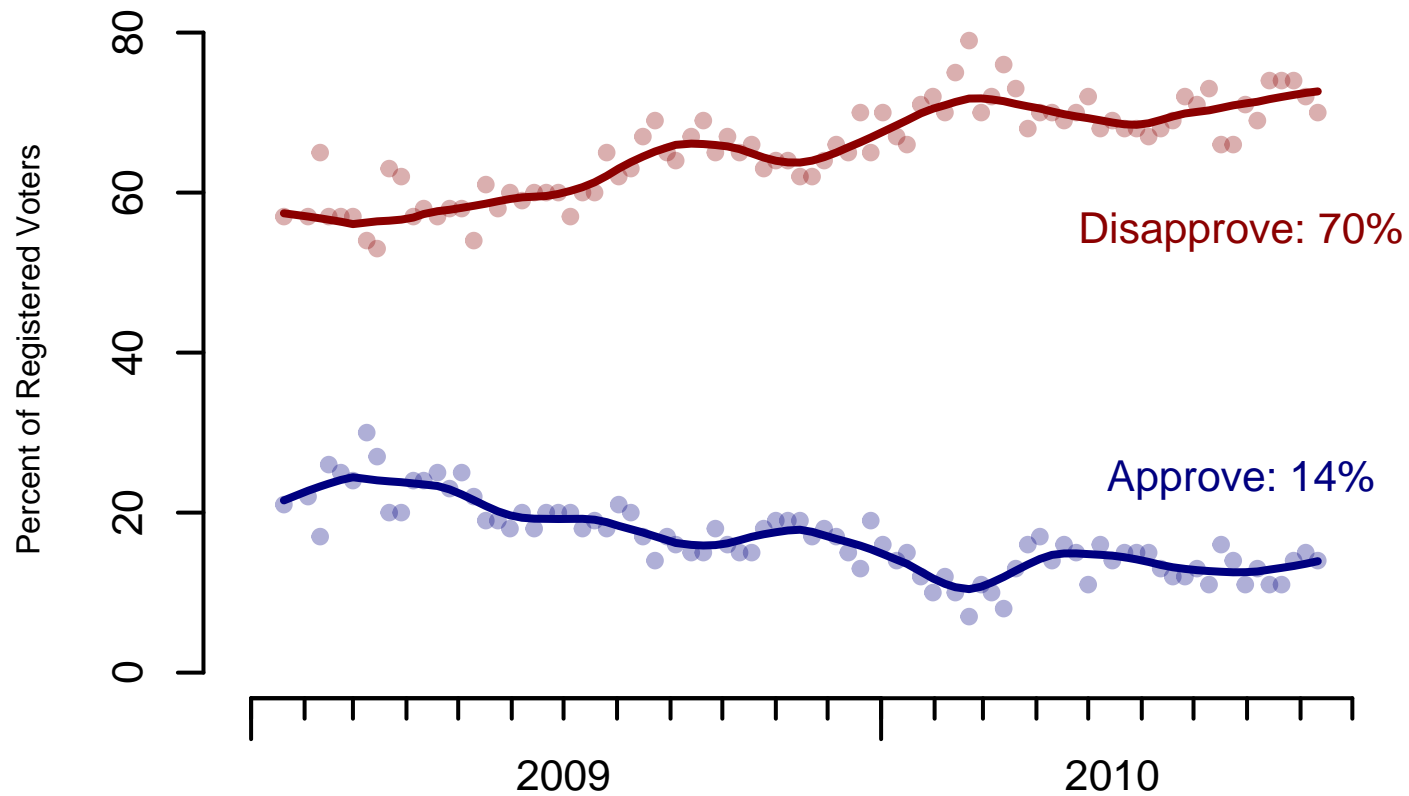


Figure 4: Congress Approval – Registered Voters

4. Approval of U.S. Congress – This Week

Overall, do you approve or disapprove of the way that the United States Congress is handling its job?

	Total	Age			Race			Gender		Education		
		18-29	30-64	65+	White	Black	Hispanic	Male	Female	HS or Less	Some College	College Grad
Strongly approve	3.5%	4.6%	3.0%	3.3%	2.7%	8.5%	3.8%	3.9%	3.2%	3.2%	5.2%	1.9%
Somewhat approve	10.4%	11.5%	10.9%	7.1%	9.0%	15.7%	15.9%	11.0%	9.9%	8.9%	7.9%	16.3%
Neither approve nor disapprove	13.9%	20.8%	13.3%	4.1%	10.9%	27.5%	22.0%	10.2%	17.2%	14.9%	13.4%	12.5%
Somewhat disapprove	21.1%	20.1%	22.4%	18.8%	22.7%	12.9%	18.5%	17.5%	24.5%	21.7%	22.6%	18.4%
Strongly disapprove	43.6%	28.1%	44.8%	65.9%	48.8%	19.9%	29.1%	53.1%	34.7%	41.0%	43.9%	48.0%
Not sure	7.5%	14.9%	5.7%	0.8%	5.9%	15.3%	10.6%	4.3%	10.4%	10.4%	7.0%	2.9%
Totals (Unweighted)	100.0% (998)	100.0% (230)	100.0% (628)	100.0% (140)	100.0% (724)	100.0% (98)	100.0% (176)	100.0% (473)	100.0% (525)	100.0% (453)	100.0% (287)	100.0% (258)

	Total	Party ID			Ideology			Region				Family Income		
		Dem	Rep	Ind	Lib	Mod	Con	Northeast	Midwest	South	West	Under 40	40-100	100+
Strongly approve	3.5%	6.2%	2.4%	1.8%	6.9%	4.4%	2.1%	2.1%	3.6%	4.0%	3.8%	5.6%	1.4%	2.9%
Somewhat approve	10.4%	18.4%	2.5%	8.0%	23.4%	12.3%	1.9%	14.1%	10.7%	9.7%	7.9%	7.9%	14.4%	10.7%
Neither approve nor disapprove	13.9%	20.6%	3.8%	9.9%	21.7%	13.6%	3.6%	17.3%	12.9%	13.4%	12.7%	15.8%	12.3%	8.3%
Somewhat disapprove	21.1%	27.6%	15.5%	19.4%	24.1%	27.1%	15.5%	21.1%	19.6%	21.6%	22.1%	19.6%	23.5%	18.5%
Strongly disapprove	43.6%	20.0%	73.2%	56.5%	20.1%	37.2%	76.5%	37.3%	48.7%	43.1%	44.2%	41.2%	44.0%	57.8%
Not sure	7.5%	7.2%	2.6%	4.4%	3.7%	5.4%	0.5%	8.0%	4.6%	8.1%	9.1%	10.0%	4.3%	1.9%
Totals (Unweighted)	100.0% (998)	100.0% (370)	100.0% (269)	100.0% (269)	100.0% (217)	100.0% (315)	100.0% (342)	100.0% (196)	100.0% (220)	100.0% (357)	100.0% (225)	100.0% (372)	100.0% (384)	100.0% (122)

The Economist/YouGov Poll
September 11-14, 2010



	Voter Registration			2008 Vote			Obama Approval		2010 Congressional Vote	
	Total	Registered	Not registered	Obama	McCain	Other	Approve	Disapprove	Dem/Lean Dem	Rep/Lean Rep
Strongly approve	3.5%	3.9%	2.6%	5.9%	1.8%	0.0%	7.0%	1.3%	5.5%	1.9%
Somewhat approve	10.4%	10.4%	10.5%	20.2%	1.4%	9.3%	25.3%	0.7%	19.6%	2.4%
Neither approve nor disapprove	13.9%	11.5%	19.9%	17.8%	2.7%	0.7%	22.4%	5.5%	20.6%	4.6%
Somewhat disapprove	21.1%	21.0%	21.4%	26.2%	15.4%	18.2%	25.6%	19.0%	28.7%	13.5%
Strongly disapprove	43.6%	49.1%	29.9%	23.8%	77.1%	70.2%	15.1%	70.6%	17.4%	75.5%
Not sure	7.5%	4.2%	15.7%	6.2%	1.5%	1.6%	4.5%	2.9%	8.1%	2.1%
Totals (Unweighted)	100.0% (998)	100.0% (774)	100.0% (224)	100.0% (402)	100.0% (349)	100.0% (49)	100.0% (418)	100.0% (518)	100.0% (442)	100.0% (416)

5. 2010 Congressional vote – Historical

If the 2010 elections for U.S. Congress were being held today, who would you vote for in the district where you live?

All Adults

	Total Republican	Total Democrat	Republican	Lean Republican	Lean Democrat	Democrat	Not Sure
September 11-14, 2010	40%	44%	37%	3%	6%	38%	16%
September 4-7, 2010	39%	44%	35%	4%	8%	36%	16%
August 28-31, 2010	37%	43%	33%	4%	7%	36%	20%
August 21-24, 2010	39%	43%	35%	4%	7%	36%	17%
August 14-17, 2010	39%	44%	34%	5%	6%	38%	17%
August 7-10, 2010	36%	46%	33%	3%	6%	40%	18%
July 31-August 3, 2010	36%	46%	29%	7%	7%	39%	18%
July 24-27, 2010	39%	43%	35%	4%	6%	37%	18%
July 17-20, 2010	40%	43%	35%	5%	6%	37%	16%
July 10-13, 2010	39%	44%	34%	5%	6%	38%	17%
One Year Ago	38%	46%	31%	7%	10%	36%	17%

Registered Voters

	Total Republican	Total Democrat	Republican	Lean Republican	Lean Democrat	Democrat	Not Sure
September 11-14, 2010	45%	46%	42%	3%	5%	41%	9%
September 4-7, 2010	44%	47%	40%	4%	7%	40%	9%
August 28-31, 2010	44%	45%	40%	4%	5%	40%	11%
August 21-24, 2010	47%	44%	43%	4%	5%	39%	9%
August 14-17, 2010	45%	45%	40%	5%	5%	40%	11%
August 7-10, 2010	42%	48%	38%	4%	4%	44%	9%
July 31-August 3, 2010	41%	48%	35%	6%	6%	42%	11%
July 24-27, 2010	43%	46%	39%	4%	6%	40%	10%
July 17-20, 2010	44%	48%	40%	4%	6%	42%	9%
July 10-13, 2010	42%	46%	38%	4%	6%	40%	12%
One Year Ago	43%	46%	36%	7%	6%	40%	12%

2010 Generic Congressional Ballot

"If the 2010 elections for U.S. Congress were being held today, who would you vote for in the district where you live?"

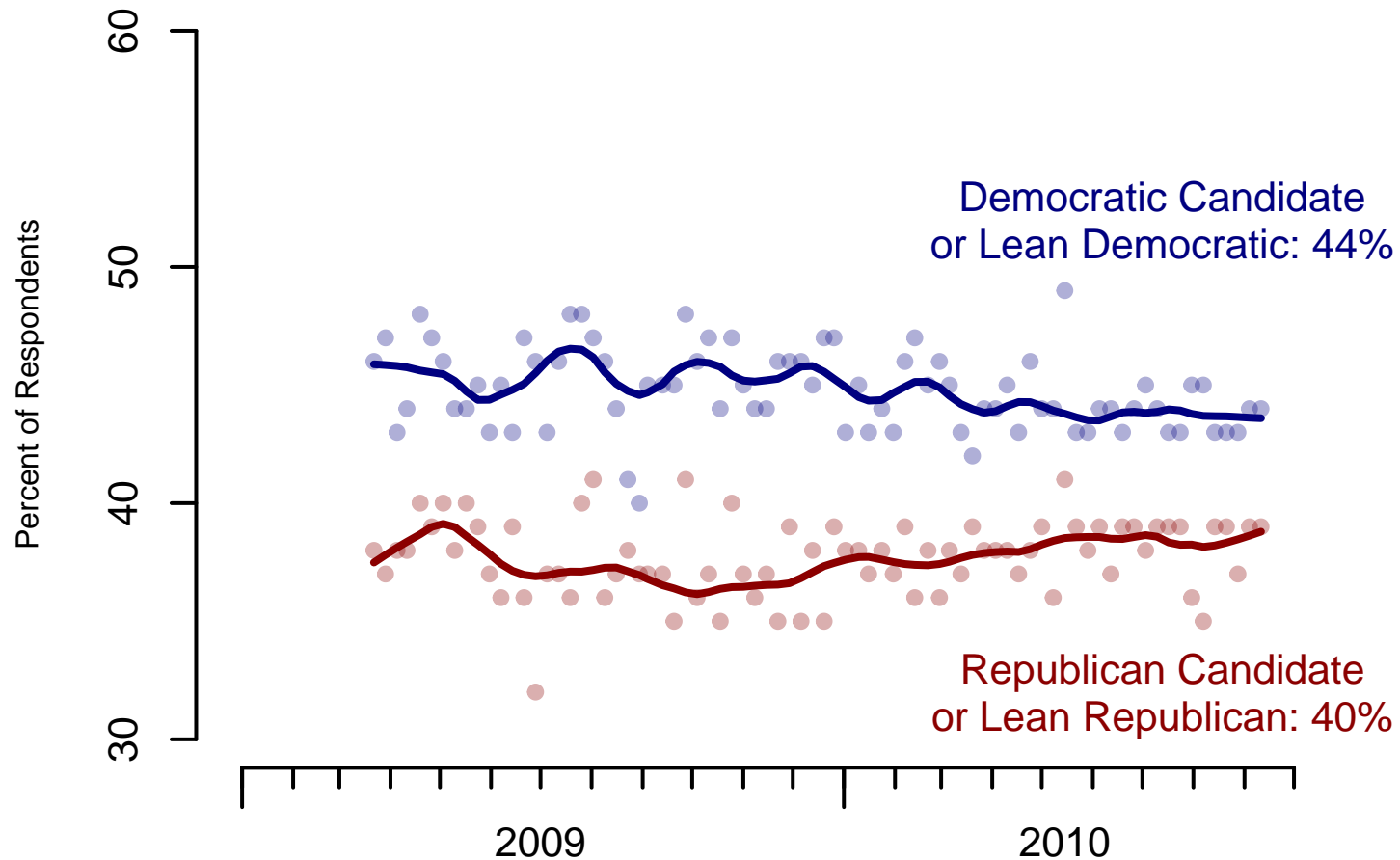


Figure 5: 2010 Congressional Vote – All Adults

2010 Generic Congressional Ballot

"If the 2010 elections for U.S. Congress were being held today, who would you vote for in the district where you live?"

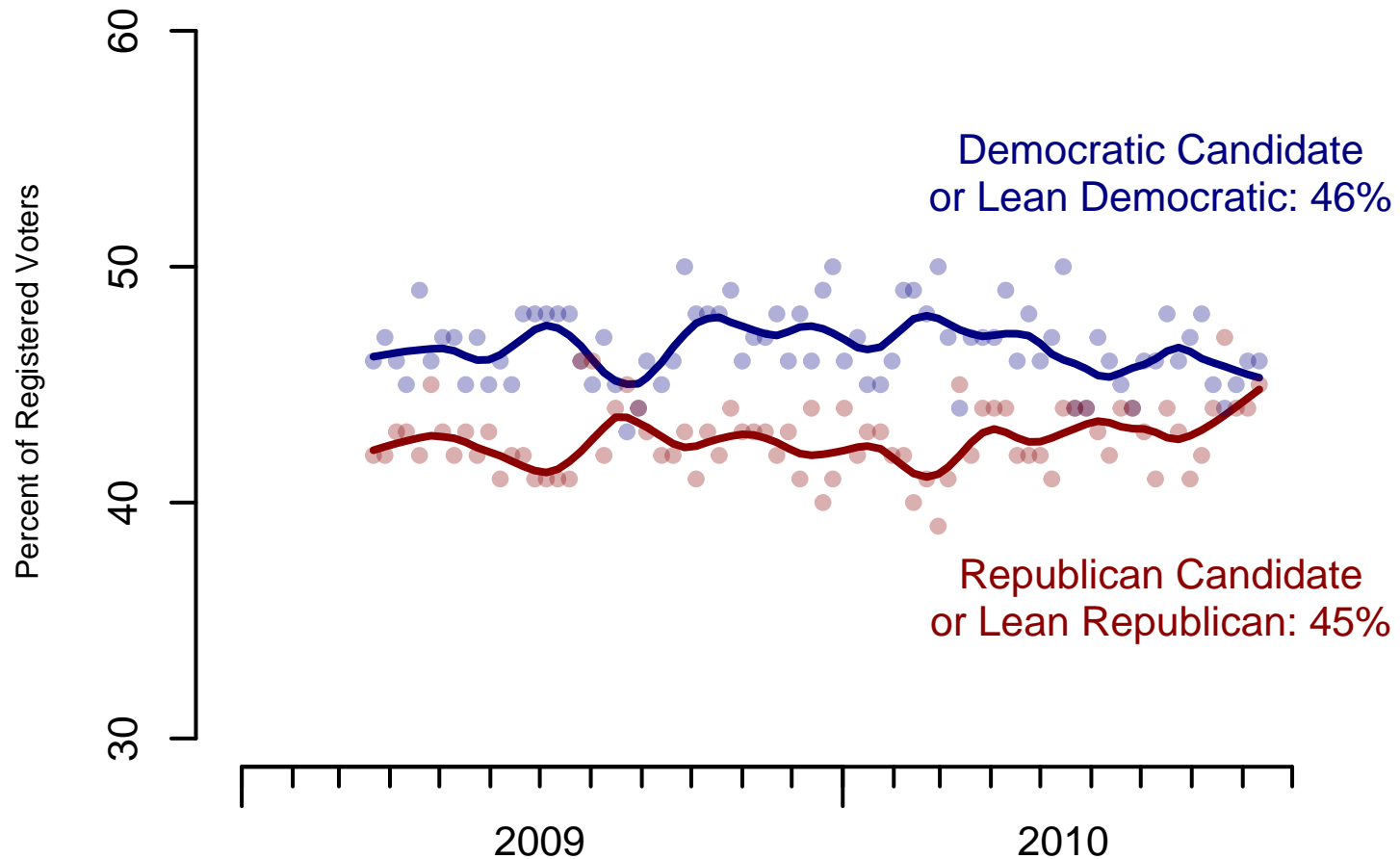


Figure 6: 2010 Congressional Vote – Registered Voters

6. 2010 Congressional vote – This Week

If the 2010 elections for U.S. Congress were being held today, who would you vote for in the district where you live?

	Total	Age			Race			Gender		Education		
		18-29	30-64	65+	White	Black	Hispanic	Male	Female	HS or Less	Some College	College Grad
Republican	36.6%	28.6%	35.6%	53.9%	41.2%	10.1%	31.4%	41.8%	31.8%	35.2%	36.3%	39.6%
Lean Republican	3.0%	2.0%	3.4%	3.2%	3.4%	0.8%	2.6%	2.3%	3.6%	3.5%	1.7%	3.6%
Lean Democrat	5.6%	7.0%	4.7%	6.4%	6.2%	2.3%	4.7%	4.8%	6.4%	7.0%	6.5%	2.0%
Democrat	38.4%	43.4%	39.6%	25.7%	32.3%	78.4%	40.8%	37.4%	39.4%	31.6%	41.0%	47.7%
Not Sure	16.3%	19.0%	16.6%	10.8%	17.0%	8.3%	20.5%	13.7%	18.8%	22.7%	14.4%	7.1%
Totals (Unweighted)	100.0% (995)	100.0% (231)	100.0% (625)	100.0% (139)	100.0% (721)	100.0% (98)	100.0% (176)	100.0% (473)	100.0% (522)	100.0% (452)	100.0% (286)	100.0% (257)

	Total	Party ID			Ideology			Region				Family Income		
		Dem	Rep	Ind	Lib	Mod	Con	Northeast	Midwest	South	West	Under 40	40-100	100+
Republican	36.6%	5.6%	92.1%	38.4%	3.8%	24.3%	82.6%	32.4%	38.0%	38.3%	36.2%	30.9%	38.7%	49.6%
Lean Republican	3.0%	1.5%	3.9%	3.8%	0.6%	3.5%	4.1%	5.7%	2.2%	3.1%	1.3%	2.3%	3.4%	3.8%
Lean Democrat	5.6%	6.7%	0.6%	8.3%	5.6%	7.8%	1.9%	6.8%	4.5%	6.4%	4.6%	5.8%	4.3%	1.9%
Democrat	38.4%	83.0%	2.4%	23.6%	83.8%	48.0%	6.7%	42.5%	36.8%	37.5%	38.1%	38.2%	37.7%	40.8%
Not Sure	16.3%	3.1%	1.0%	26.0%	6.1%	16.4%	4.7%	12.6%	18.4%	14.8%	19.9%	22.7%	15.9%	3.8%
Totals (Unweighted)	100.0% (995)	100.0% (371)	100.0% (269)	100.0% (268)	100.0% (216)	100.0% (315)	100.0% (343)	100.0% (196)	100.0% (218)	100.0% (356)	100.0% (225)	100.0% (370)	100.0% (384)	100.0% (122)

	Total	Voter Registration		2008 Vote			Obama Approval		2010 Congressional Vote	
		Registered	Not registered	Obama	McCain	Other	Approve	Disapprove	Dem/Lean Dem	Rep/Lean Rep
Republican	36.6%	41.8%	23.7%	5.7%	84.6%	43.6%	5.3%	65.8%	0.0%	92.5%
Lean Republican	3.0%	3.2%	2.4%	1.3%	4.8%	7.9%	0.8%	5.2%	0.0%	7.5%
Lean Democrat	5.6%	4.6%	8.1%	7.4%	2.4%	0.0%	5.9%	4.2%	12.8%	0.0%
Democrat	38.4%	41.1%	31.7%	79.2%	4.0%	16.7%	78.5%	8.7%	87.2%	0.0%
Not Sure	16.3%	9.3%	34.0%	6.3%	4.2%	31.8%	9.4%	16.1%	0.0%	0.0%
Totals (Unweighted)	100.0%	100.0%	100.0%	100.0%	100.0%	100.0%	100.0%	100.0%	100.0%	100.0%

continued on the next page . . .

continued from previous page

Total	Voter Registration		2008 Vote			Obama Approval		2010 Congressional Vote	
	Registered	Not registered	Obama	McCain	Other	Approve	Disapprove	Dem/Lean Dem	Rep/Lean Rep
(995)	(772)	(223)	(402)	(348)	(49)	(418)	(517)	(442)	(417)

7. Direction of country – Historical

Would you say things in this country today are...

	All Adults		
	Right Track	Wrong Direction	Not Sure
September 11-14, 2010	29%	57%	14%
September 4-7, 2010	33%	54%	13%
August 28-31, 2010	28%	57%	15%
August 21-24, 2010	29%	58%	13%
August 14-17, 2010	28%	61%	12%
August 7-10, 2010	30%	56%	14%
July 31-August 3, 2010	29%	56%	15%
July 24-27, 2010	32%	52%	16%
July 17-20, 2010	32%	52%	16%
July 10-13, 2010	29%	56%	15%
One Year Ago	35%	52%	13%

	Registered Voters		
	Right Track	Wrong Direction	Not Sure
September 11-14, 2010	30%	58%	13%
September 4-7, 2010	35%	56%	9%
August 28-31, 2010	28%	59%	12%
August 21-24, 2010	30%	60%	10%
August 14-17, 2010	28%	62%	9%
August 7-10, 2010	33%	57%	10%
July 31-August 3, 2010	31%	58%	11%
July 24-27, 2010	35%	54%	11%
July 17-20, 2010	36%	53%	11%
July 10-13, 2010	29%	58%	13%
One Year Ago	37%	53%	9%

Direction of Country

"Would you say things in this country today are generally headed in the right direction or off on the wrong track?"

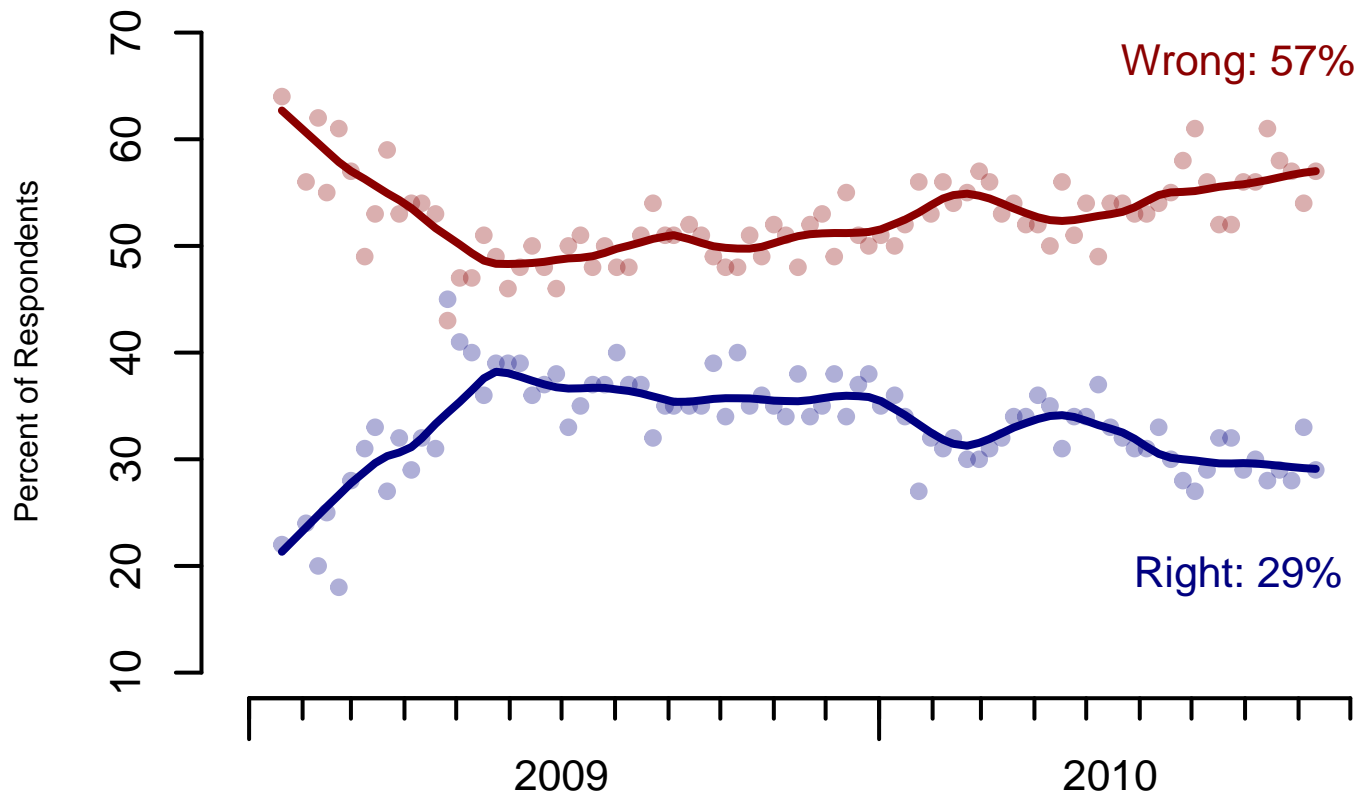


Figure 7: Direction of Country – All Adults

Direction of Country

"Would you say things in this country today are generally headed in the right direction or off on the wrong track?"

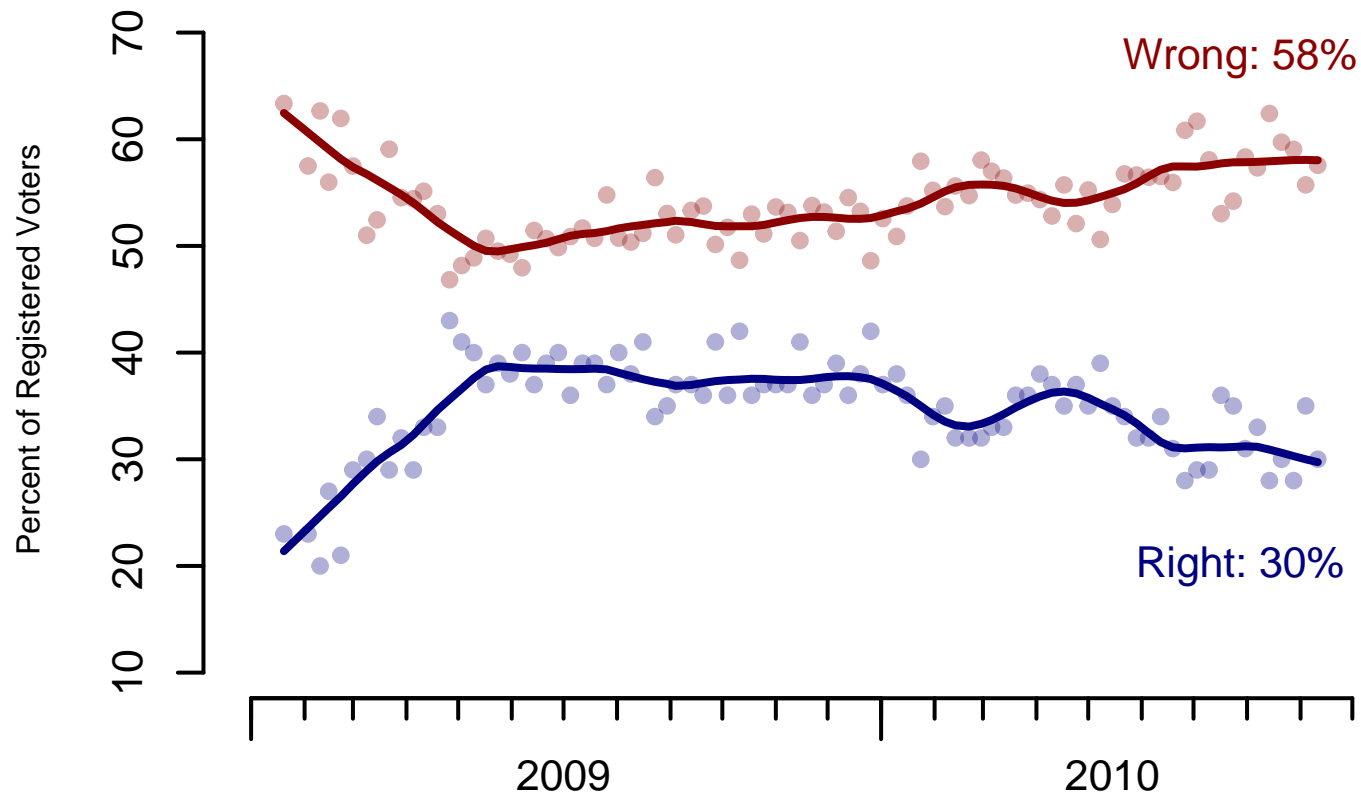


Figure 8: Direction of Country – Registered Voters

8. Direction of Country – This Week

Would you say things in this country today are...

	Total	Age			Race			Gender		Education		
		18-29	30-64	65+	White	Black	Hispanic	Male	Female	HS or Less	Some College	College Grad
Generally headed in the right direction	28.7%	33.1%	28.4%	22.4%	24.4%	51.9%	36.4%	31.9%	25.8%	23.7%	30.5%	35.6%
Off on the wrong track	57.1%	46.7%	58.9%	68.8%	63.2%	26.1%	44.0%	58.6%	55.7%	62.1%	53.6%	52.4%
Not sure	14.2%	20.2%	12.7%	8.8%	12.4%	21.9%	19.6%	9.5%	18.5%	14.2%	15.9%	12.0%
Totals (Unweighted)	100.0% (995)	100.0% (231)	100.0% (624)	100.0% (140)	100.0% (723)	100.0% (97)	100.0% (175)	100.0% (472)	100.0% (523)	100.0% (450)	100.0% (288)	100.0% (257)

	Total	Party ID			Ideology			Region				Family Income		
		Dem	Rep	Ind	Lib	Mod	Con	Northeast	Midwest	South	West	Under 40	40-100	100+
Generally headed in the right direction	28.7%	54.4%	7.7%	20.0%	56.5%	39.9%	6.9%	28.6%	27.8%	28.3%	30.6%	25.8%	33.4%	31.2%
Off on the wrong track	57.1%	28.9%	88.8%	66.7%	23.2%	48.5%	88.5%	55.1%	56.6%	60.1%	54.6%	56.6%	57.1%	62.6%
Not sure	14.2%	16.7%	3.6%	13.3%	20.3%	11.5%	4.6%	16.3%	15.7%	11.6%	14.8%	17.6%	9.5%	6.1%
Totals (Unweighted)	100.0% (995)	100.0% (369)	100.0% (269)	100.0% (268)	100.0% (217)	100.0% (315)	100.0% (341)	100.0% (195)	100.0% (218)	100.0% (357)	100.0% (225)	100.0% (370)	100.0% (383)	100.0% (122)

	Total	Voter Registration		2008 Vote			Obama Approval		2010 Congressional Vote	
		Registered	Not registered	Obama	McCain	Other	Approve	Disapprove	Dem/Lean Dem	Rep/Lean Rep
Generally headed in the right direction	28.7%	29.5%	26.7%	54.3%	4.6%	12.6%	64.7%	3.8%	55.3%	6.4%
Off on the wrong track	57.1%	57.6%	56.0%	26.9%	92.2%	67.8%	17.2%	90.9%	24.4%	90.3%

continued on the next page ...

continued from previous page

	Voter Registration			2008 Vote			Obama Approval		2010 Congressional Vote	
	Total	Registered	Not registered	Obama	McCain	Other	Approve	Disapprove	Dem/Lean Dem	Rep/Lean Rep
Not sure	14.2%	12.9%	17.3%	18.9%	3.2%	19.6%	18.0%	5.3%	20.2%	3.3%
Totals (Unweighted)	100.0% (995)	100.0% (771)	100.0% (224)	100.0% (401)	100.0% (348)	100.0% (49)	100.0% (417)	100.0% (517)	100.0% (440)	100.0% (416)

The Economist/YouGov Poll
September 11-14, 2010



Sponsorship	<i>The Economist</i>
Fieldwork	YouGov
Interviewing Dates	September 11-14, 2010
Target population	U.S. citizens, aged 18 and over.
Sampling method	Respondents were selected from YouGov's PollingPoint panel using sample matching. A random sample (stratified by age, gender, race, education, and region) was selected from the 2005–2007 American Community Study. Voter registration, turnout, religion, news interest, minor party identification, and non-placement on an ideology scale, were imputed from the 2008 Current Population Survey Registration and Voting Supplement and the Pew Religion in American Life Survey. Matching respondents were selected from the PollingPoint panel, an opt-in Internet panel.
Weighting	The sample was weighted using propensity scores based on age, gender, race, education, news interest, voter registration, and non-placement on an ideology scale. The weights range from 0.4 to 3.22, with a mean of one and a standard deviation of 0.5.
Number of respondents	1,000
Margin of error	± 3.5% (adjusted for weighting)
Survey mode	Web-based interviews
Full results	Available online at http://www.economist.com/democracyinamerica .